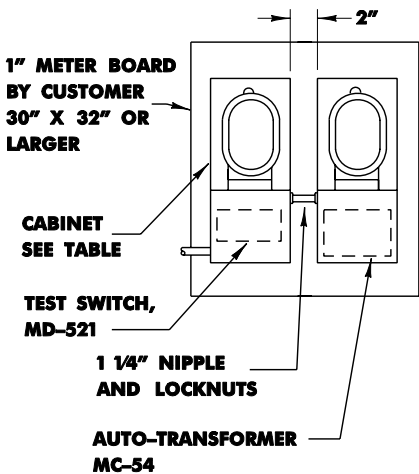
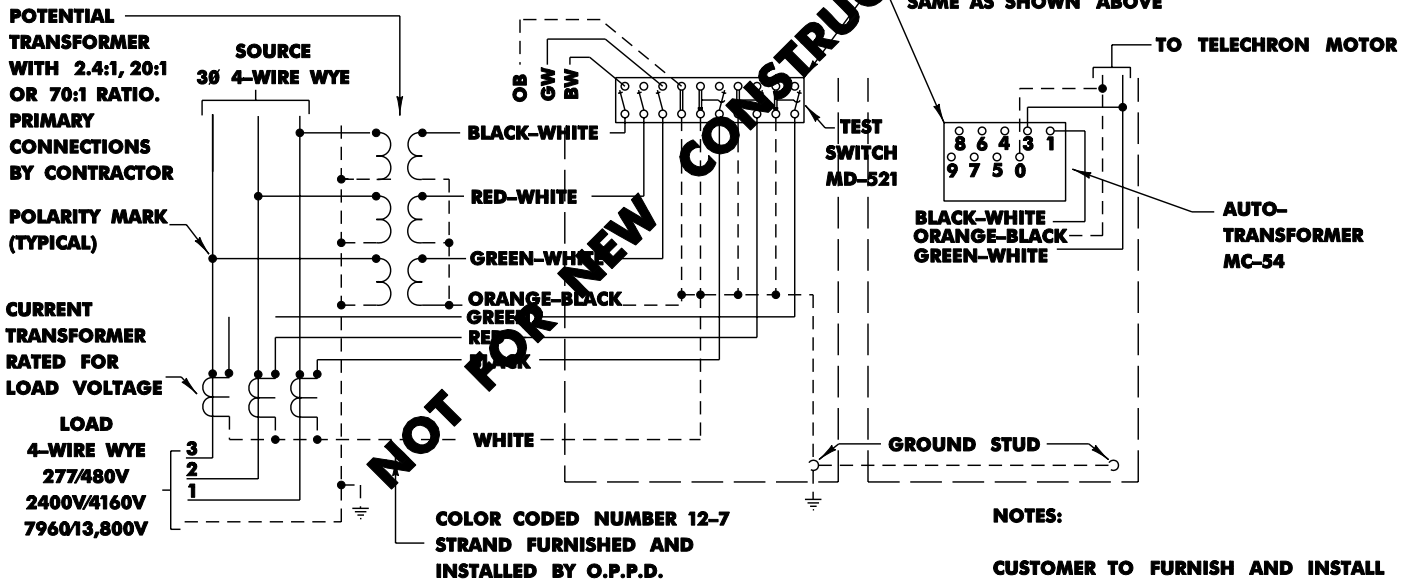
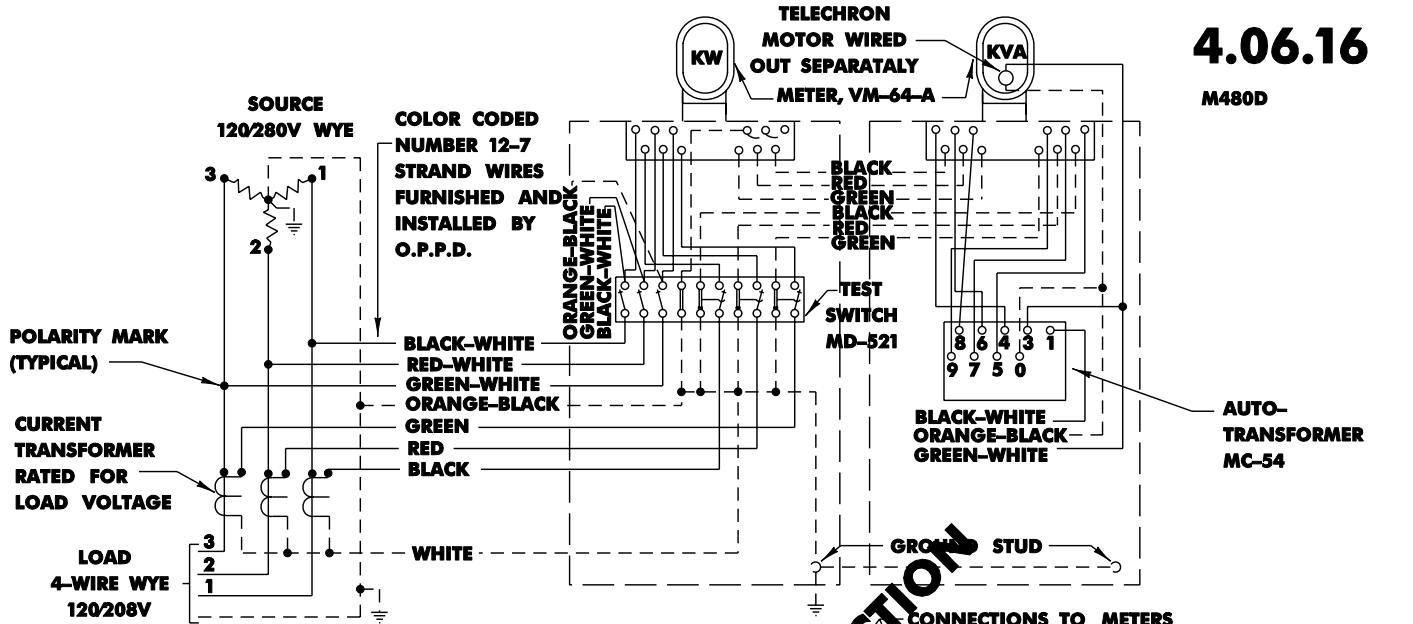


3Ø FOUR WIRE WYE METERING

KW AND KVA - FOR USE WITH INSTRUMENT TRANSFORMERS

4.06.16

M480D



NOT LESS THAN
DIMENSION A
-SEE TABLE-

TABLE		
SERVICE	CABINET	DIMENSION A
120/208V	MD-1190	16"
277/480V	MD-1190-B	17"
2400/4160V	MD-1190-B	17"
7960/13,800V	MD-1190-B	17"



NOTES:

CUSTOMER TO FURNISH AND INSTALL "NATIONAL ELECTRICAL CODE" GRADE STEEL CABINET OF ADEQUATE SIZE FOR THE INSTRUMENT TRANSFORMERS AND ALL WIRING CONNECTIONS

SERVICE ENTRANCE NEUTRAL MUST BE BONDED TO INSTRUMENT TRANSFORMER CABINET

CUSTOMER TO FURNISH AND INSTALL 1" CONDUIT FROM INSTRUMENT TRANSFORMER CABINET TO METER TEST CABINET

PHASE ROTATION ON POTENTIAL AT THE METER MUST BE 1-2-3 BY TEST

FOR LUG CONNECTIONS ON CURRENT TRANSFORMERS UP TO 600 AMPERES MINIMUM BOLT SIZE 3/8" OVER 600 AMPERES MINIMUM BOLT SIZE 1/2"